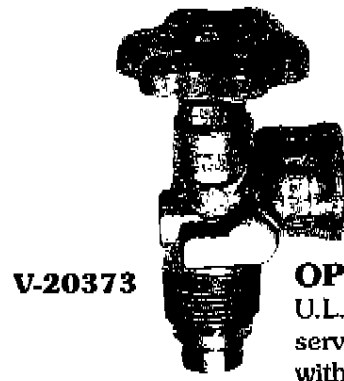
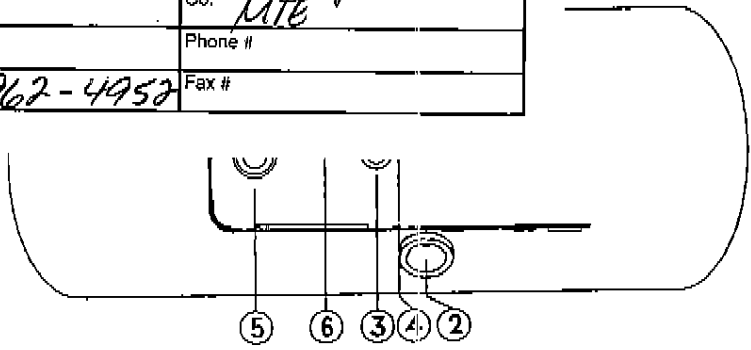


Post-It® Fax Note	7671	Date	7/19	# of pages	1
To	Neil	From	Lesley		
Co./Dept.		Co.	MTE		
Phone #		Phone #			
Fax #	(928) 962-4952	Fax #			

VALVE LAYOUT



V-20373
OPENING 3
 U.L. Listed vapor service valve designed with internal excess flow check.

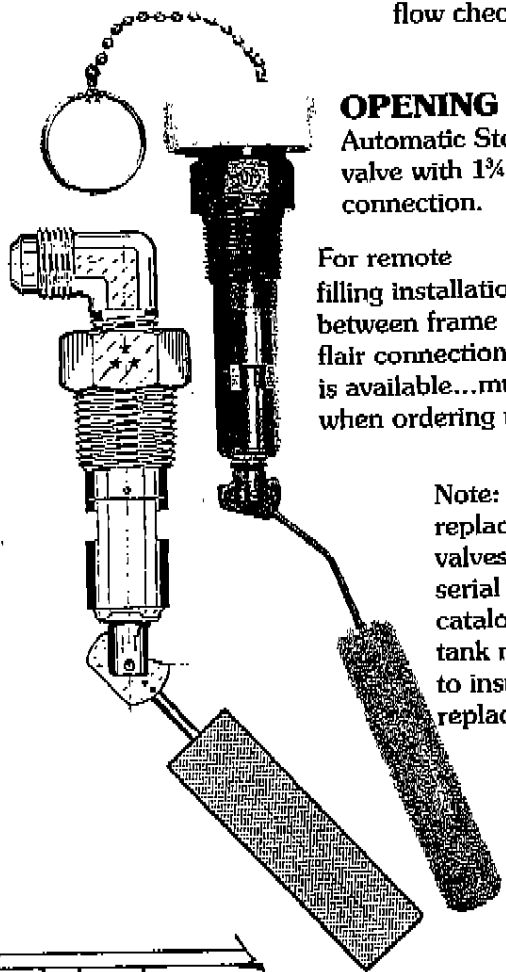


V-20479
OPENING 2*
 U.L. Listed internal spring loaded relief valve. 312# P.S.I. setting.



V-20058
OPENING 4
 Outage valve installed to insure proper filling. Use for proving function of automatic Stop/Fill valve.

New Style

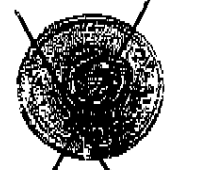


OPENING 6
 Automatic Stop/Fill valve with 1 1/4" ACME connection.
 For remote filling installations between frame rails, a 1/2" SAE flair connection valve is available...must request when ordering tank.

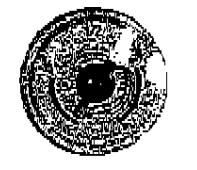
Note: When ordering replacement Stop/Fill valves, refer to serial number and catalog numbers on tank name plate to insure proper replacement.



G-12846
 Remote sender
Old Style

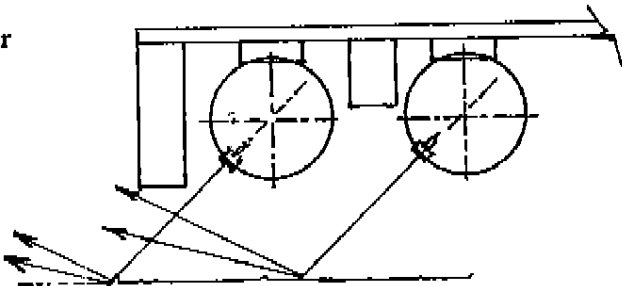


G-12650
 Remote sender



G-12653
 Standard dial chamber

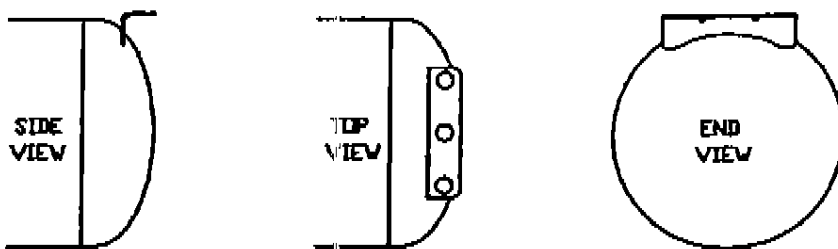
OPENING 5
 U.L. Listed visible gauge dial chambers are optional and must be ordered with tanks. Twin sight (remote 90-OHM sender) available option for remote gauging.



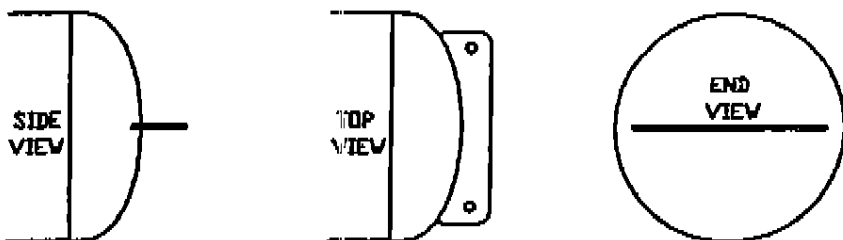
* Code requires relief valve venting be directed up or down within 45 degrees of vertical and not impinge on the tank or vehicle. Manchester installs relief valves on most designs at 45 degrees downward allowing for venting compliance without pipe-away adaptors (see graphic). If your installation requires pipe-away adaptors to comply with code, see "ACCESSORIES" page.

TYPICAL BRACKET DESIGNS

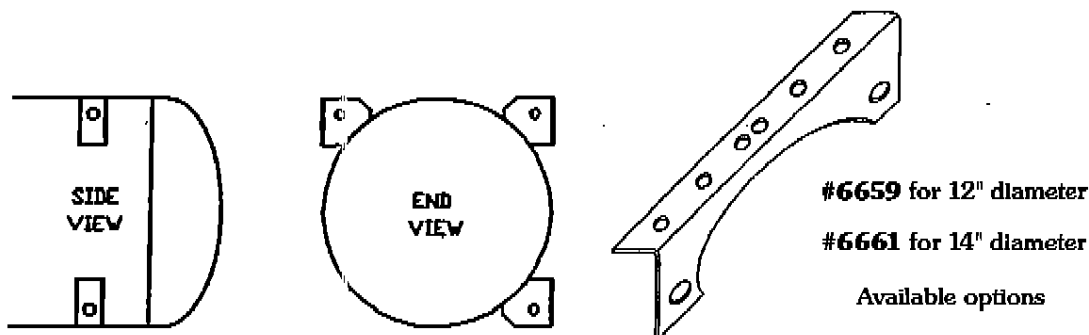
NOTE: Your tank installations must withstand eight times the loaded weight to assure proper code compliance.



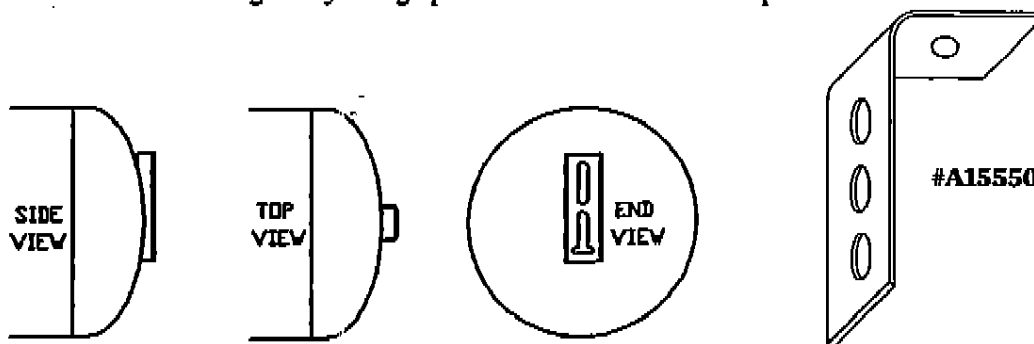
TOP ANGLE CROSS BRACKETS for mounting to the floor stringer or cross-members of RV.



WING BRACKET for mounting to floor cross-members or stringers.



UNIVERSAL CORNER BRACKETS designed to mount to the frame or floor cross-members/stringers by using spacer brackets. Available options.



ADJUSTABLE CHANNEL BRACKETS use with carriage bolts and "L" brackets for mounting to stringers or floor cross-members of vans. "L" brackets are included.

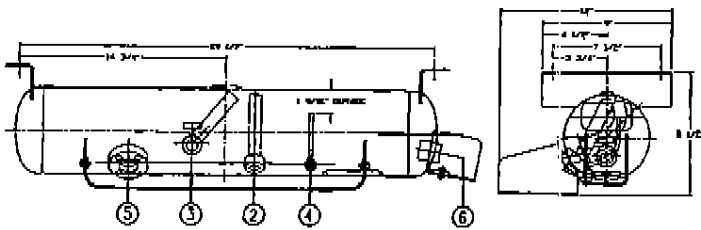


A.S.M.E. PROPANE TANK DESIGNS

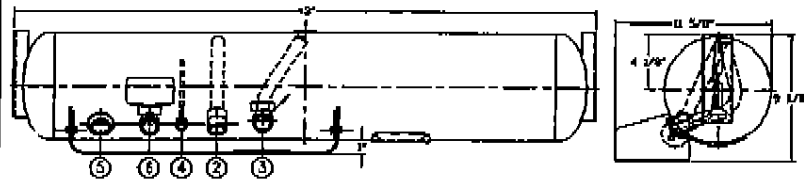
6" thru 20" DIAMETERS

The following are standard designs and current requirements of ANSI 119.2, 1996 edition, 312 P.S.I. working pressure and carry Canadian Provincial registration numbers.

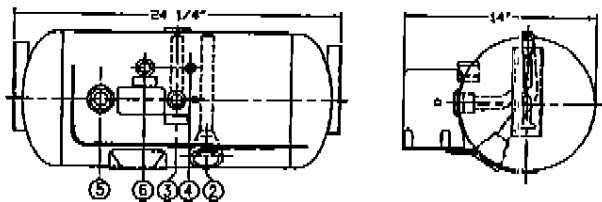
For single or small orders, see current price sheet listing stock tanks or call Customer Service.



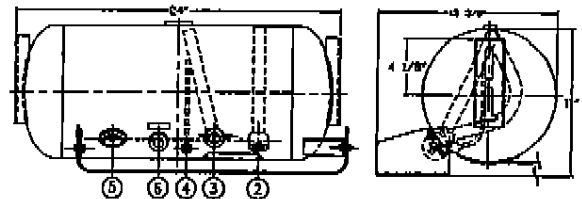
PART NO.	DIA.	LENGTH	W.C.	LP	W.T.
6850	6"	30"	3.3 GAL	2.6 GAL	34#



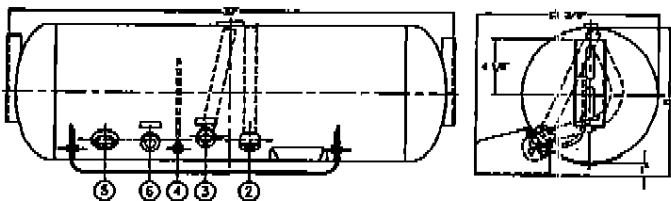
PART NO.	DIA.	LENGTH	W.C.	LP	W.T.
6811	8"	42"	8.4 GAL	6.7 GAL	45#



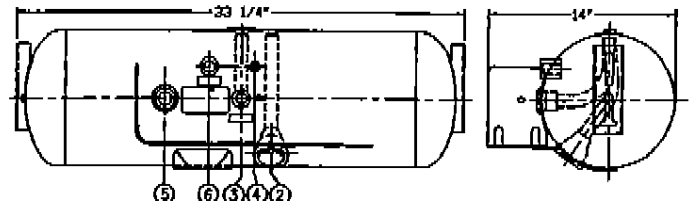
PART NO.	DIA.	LENGTH	W.C.	LP	W.T.
6812	10"	23"	6.9 GAL	5.5 GAL	34#



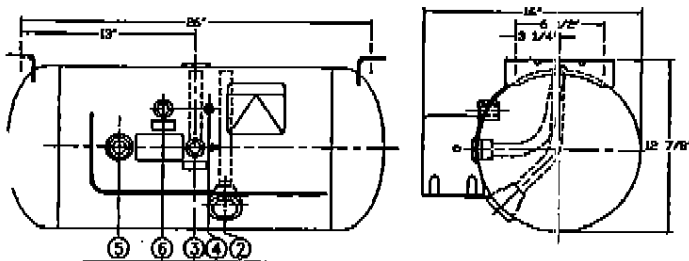
PART NO.	DIA.	LENGTH	W.C.	LP	W.T.
6813	10"	23"	6.9 GAL	5.5 GAL	38#



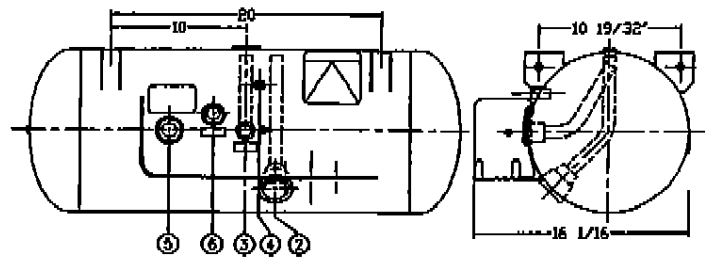
PART NO.	DIA.	LENGTH	W.C.	LP	W.T.
6814	10"	32"	9.9 GAL	7.9 GAL	46#



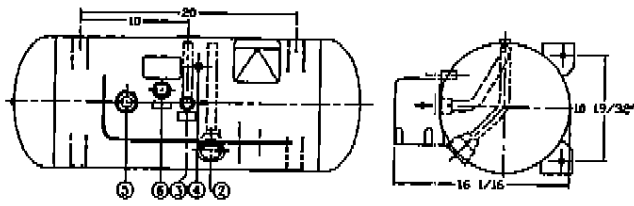
PART NO.	DIA.	LENGTH	W.C.	LP	W.T.
6815	10"	32"	9.9 GAL	7.9 GAL	44#



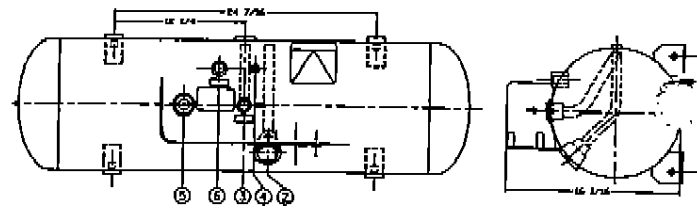
PART NO.	DIA.	LENGTH	W.C.	LP	W.T.
6840	12"	28"	12.2 GAL	9.8 GAL	50#



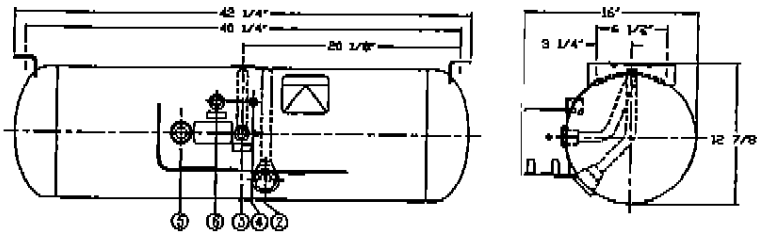
PART NO.	DIA.	LENGTH	W.C.	LP	W.T.
6802	12"	32"	14.1 GAL	11.2 GAL	63#



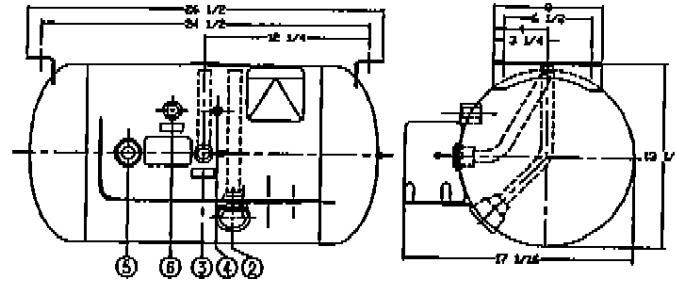
PART NO.	DIA.	LENGTH	W.C.	LP	W.T.
6803	12"	32"	14.1 GAL	11.2 GAL	63#



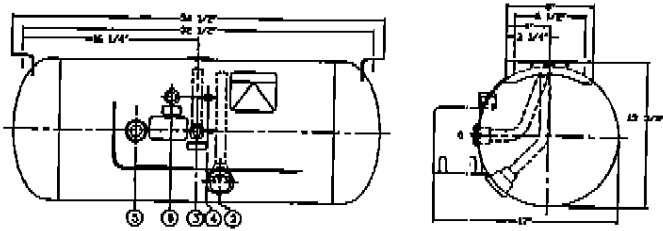
PART NO.	DIA.	LENGTH	W.C.	LP	W.T.
6818	12"	42"	18.8 GAL	15.0 GAL	76#



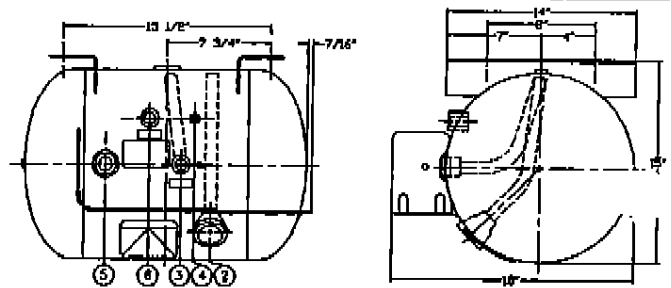
PART NO.	DIA.	LENGTH	W.C.	LP	W.T.
6819	12"	42"	18.8 GAL	15.0 GAL	77#



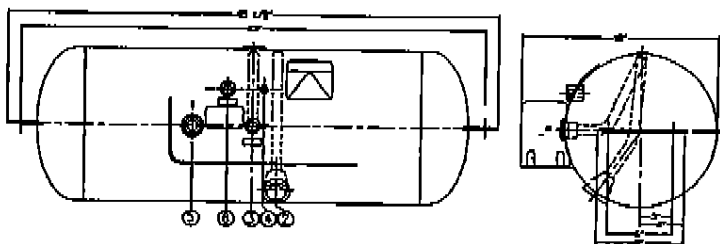
PART NO.	DIA.	LENGTH	W.C.	LP	W.T.
6822	13"	26"	13.1 GAL	10.5 GAL	66#



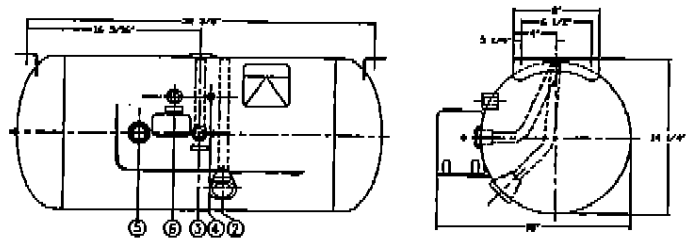
PART NO.	DIA.	LENGTH	W.C.	LP	W.T.
6823	13"	34"	17.5 GAL	14.0 GAL	85#



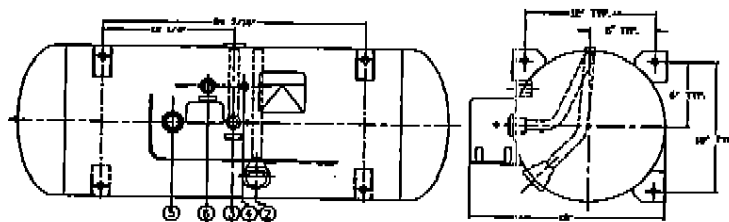
PART NO.	DIA.	LENGTH	W.C.	LP	W.T.
6824	14"	21"	11.9 GAL	9.5 GAL	58#



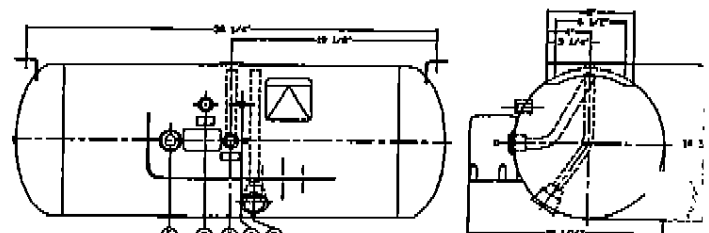
PART NO.	DIA.	LENGTH	W.C.	LP	W.T.
6807	14"	40"	24.0 GAL	19.2 GAL	90#



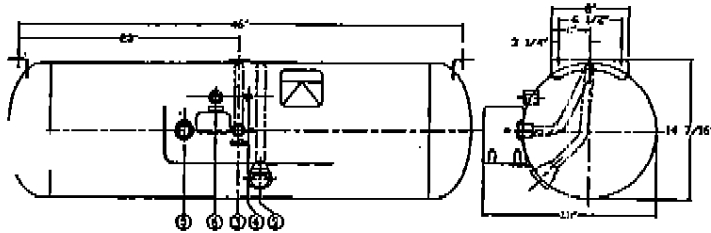
PART NO.	DIA.	LENGTH	W.C.	LP	W.T.
6826	14"	34"	20.2 GAL	16.2 GAL	72#



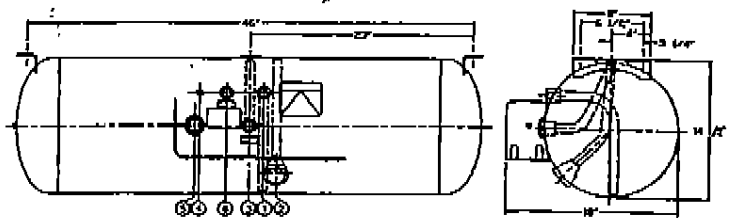
PART NO.	DIA.	LENGTH	W.C.	LP	W.T.
6828	14"	40"	24.0 GAL	19.2 GAL	90#



PART NO.	DIA.	LENGTH	W.C.	LP	W.T.
6829	14"	40"	24.0 GAL	19.2 GAL	91#

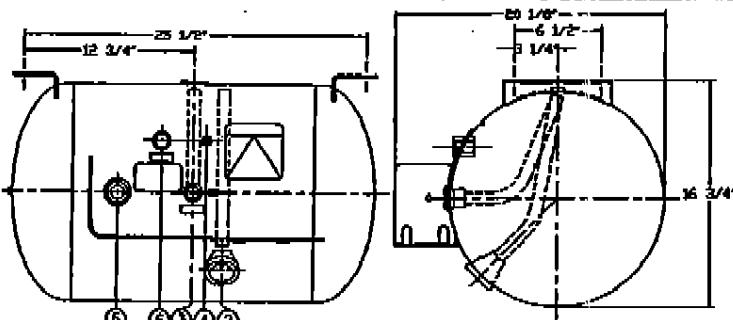


PART NO.	DIA.	LENGTH	W.C.	LP	W.T.
6830	14"	48"	29.2 GAL	23.4 GAL	05#

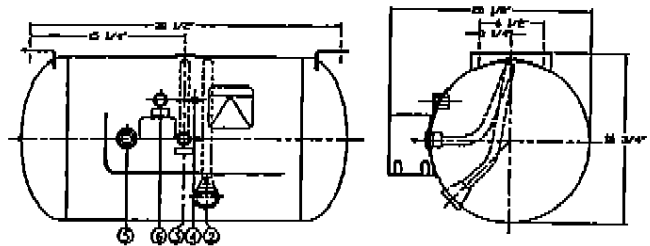


DUAL USE*

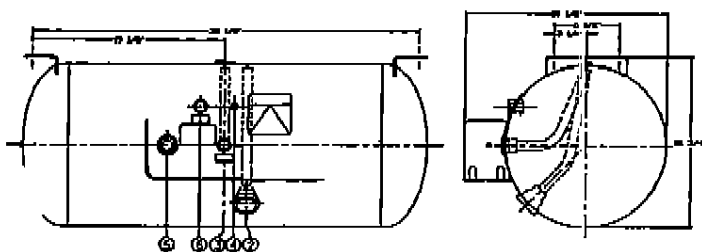
PART NO.	DIA.	LENGTH	W.C.	LP	W.T.
28001	14"	48"	29.2 GAL	23.4 GAL	104#



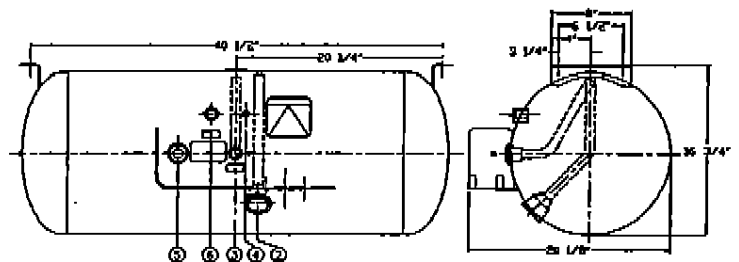
PART NO.	DIA.	LENGTH	W.C.	LP	W.T.
6839	16"	27"	20.2 GAL	16.2 GAL	83#



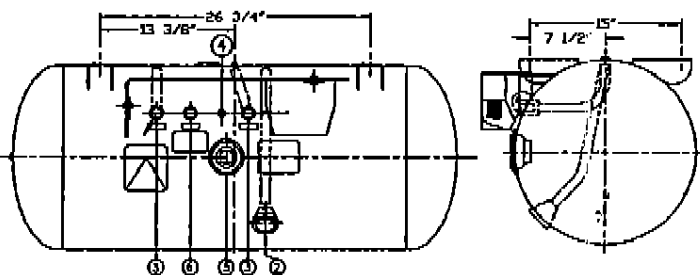
PART NO.	DIA.	LENGTH	W.C.	LP	W.T.
6842	16"	32"	24.4 GAL	19.5 GAL	93#



PART NO.	DIA.	LENGTH	W.C.	LP	W.T.
6841	16"	40"	31.1 GAL	24.9 GAL	116#

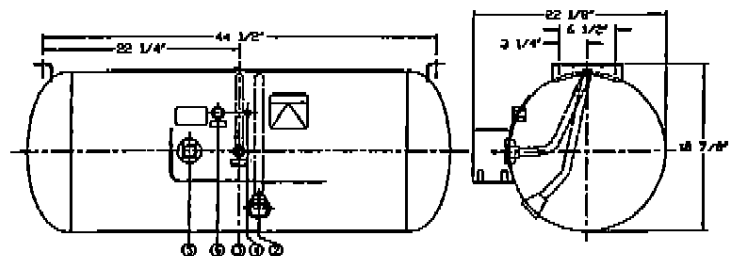


PART NO.	DIA.	LENGTH	W.C.	LP	W.T.
6845	16"	42"	32.8 GAL	26.2 GAL	113#



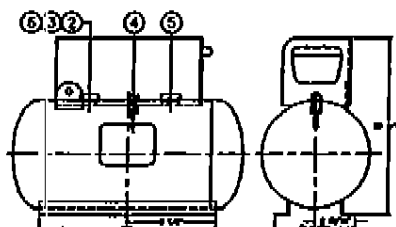
DUAL USE*

PART NO.	DIA.	LENGTH	W.C.	LP	W.T.
6836	18"	44"	43.2 GAL	34.6 GAL	145#



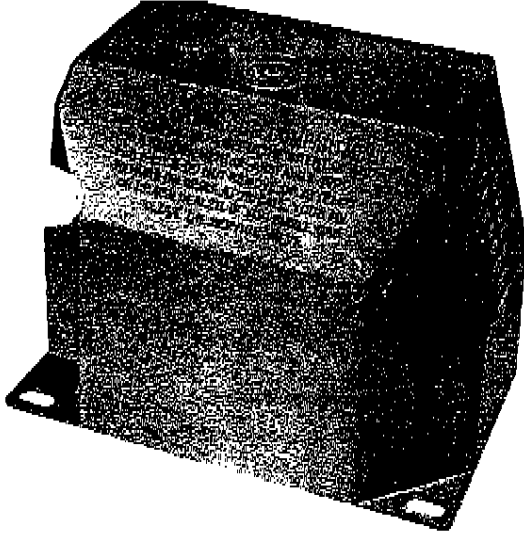
PART NO.	DIA.	LENGTH	W.C.	LP	W.T.
6837	18"	48"	47.5 GAL	38.0 GAL	165#

TOP FITTED BOAT TANKS

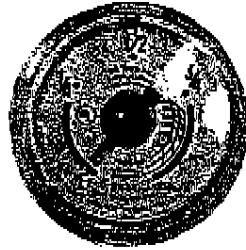


PART NO.	DIA.	LENGTH	W.C.	LP	W.T.
6001	8"	17"	3.1 GAL	2.5 GAL	21#
6007	8"	27"	5.3 GAL	4.2 GAL	30#

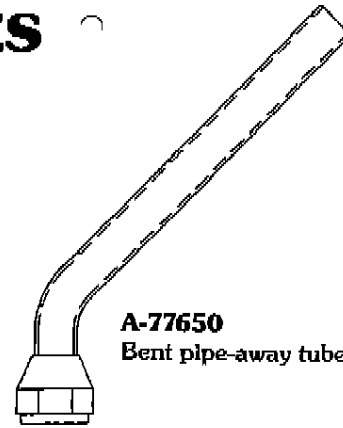
ACCESSORIES



ORDER 6689 Regulator compartment enclosure designed to mount on tank guard.



G12653
Visible dial chamber.
Snaps on.



A-77650
Bent pipe-away tube



V-20694
Pipe-away adaptor with 3/4" SAE flare outlet

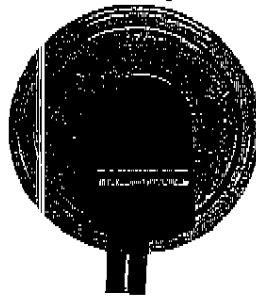


V-20479
Relief valve 3/4" NPT



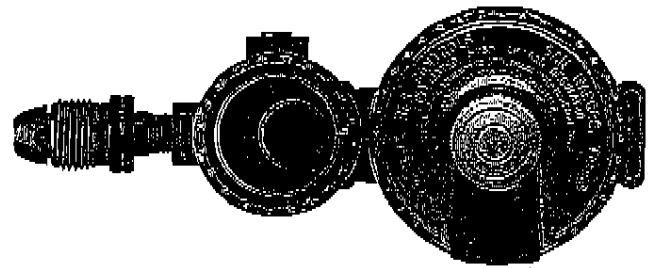
Old Style

G12650
Remote, 90 ohm twin sight sender.
Snaps on.



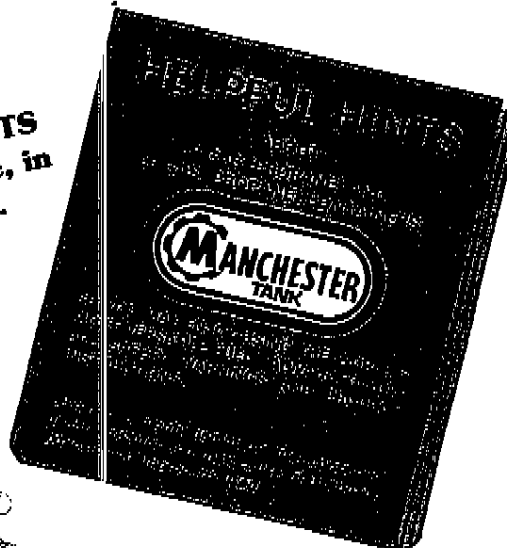
New Style

G-12846
Remote, 90 OHM Sender with new measuring technology and sealed electrical connections for durability.



1778
Two stage regulator
Marshall Brass

NOTE
Manchester's popular **HELPFUL HINTS BOOKLETS** are available at no charge, in reasonable quantities.
CALL
Customer Service
800/USS TANK



Installations of propane tanks must comply with ANSI and NFPA code books.

A.N.S.I. A-119.2 available from:
RVIA, 1896 Preston White Drive,
Reston, VA 22090

N.F.P.A. Pamphlet 58 available from:
NFPA, P.O. Box 9101,
Quincy, MA 02269

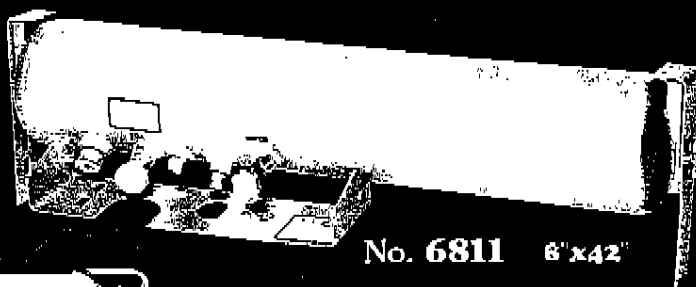
**The more popular
A.S.M.E. tanks...**
with fitting and bracket layouts.



No. 6802 12'x32'



No. 6807 14'x40'



No. 6811 6'x42'

No. 6814 10'x32'



No. 6845 16'x42'

No. 6818 12'x42'



800/877-8265 FAX: 800/876-6449 519/842-9081
(Canada)

Distributed by:



Cat.no. 6001
revised 1/97